

The Key to High-Performance Air Cleaning



Good Health Starts with Clean Air

The air that we breathe has a great impact on our lives. We can survive for days without food and water, but only a few minutes without air. The quality of the air that we breathe is also of essential importance for our well-being. The less allergens, microorganisms and chemical pollutants we breathe, the smaller the chance of becoming ill. Medical conditions arising from air pollution can also have financial consequences. Healthcare costs and lost productivity in the workplace cost billions each year.

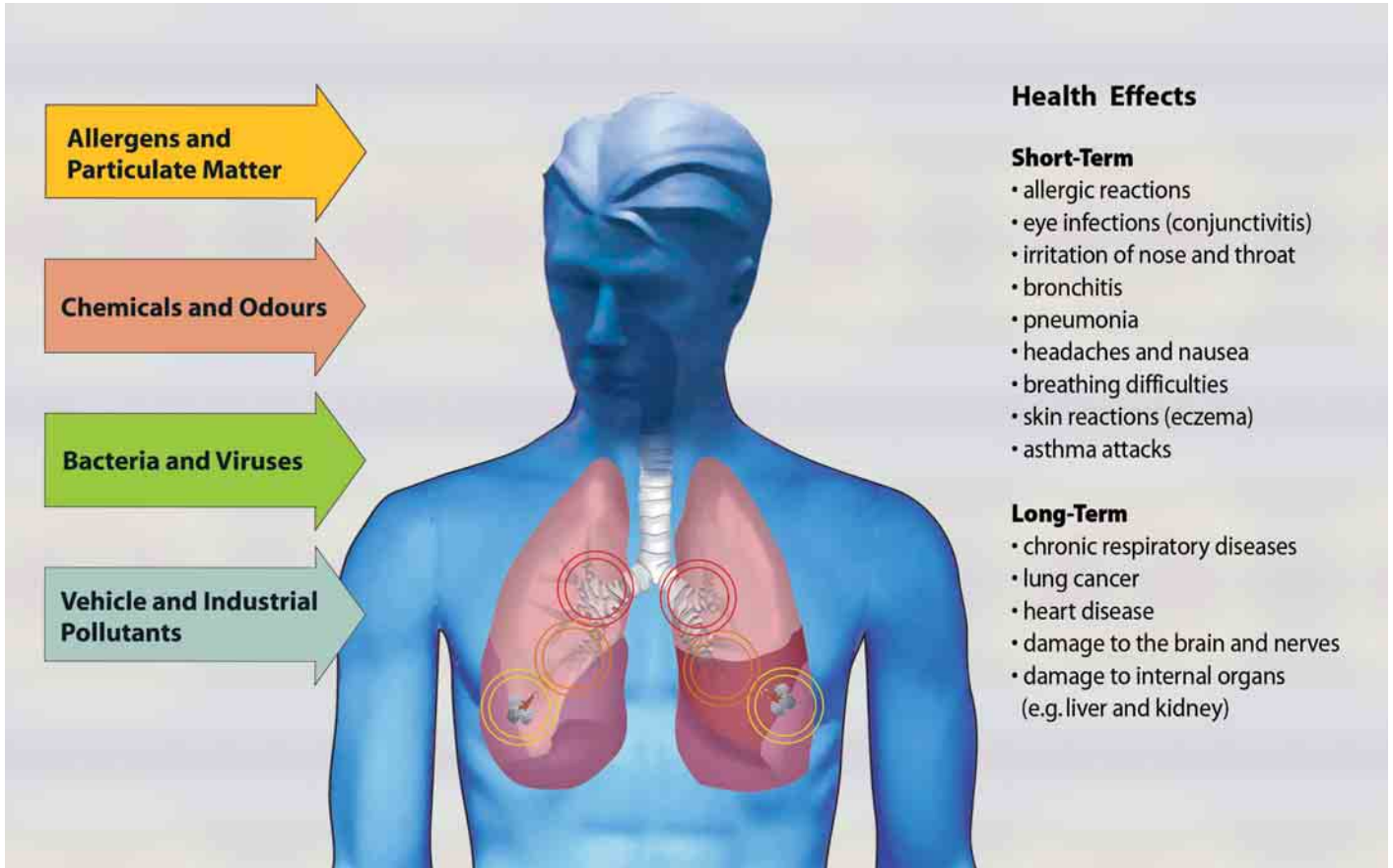
IQAir® offers the most advanced air cleaning solutions for indoor air pollution. The superior performance of the systems has led to the worldwide use of IQAir® in the most challenging indoor environments. For example, the systems are used to protect patients and staff against serious infections in critical hospital and healthcare settings and to remove toxic chemicals in high-tech laboratories. The advanced air cleaning technologies used by IQAir® are the result of an unparalleled 45 year track record in air purification.



Air Pollution and its Effects

Air pollution can affect our health in many ways with both short-term and long-term effects. Different groups of people are affected by air pollution in different ways. Some individuals are much more sensitive to pollutants than others. Young children, the elderly and individuals with health problems such as asthma, heart and lung

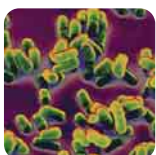
disease often suffer more from the effects of air pollution. The extent to which an individual is harmed by airborne contaminants will depend on the person's total exposure to particulates and chemical substances, i.e. the duration of exposure and the concentration of the pollutants.



IQAir® systems feature the most reliable and efficient air cleaning technologies against indoor pollutants.



Pollen, spores, dust mite allergens and other particular matter can trigger hay fever, asthma and other allergic reactions. Even short-term exposure to elevated concentrations of fine particles can significantly contribute to heart disease.



Microorganisms such as viruses, bacteria and fungal spores are responsible for various infections like tuberculosis, influenza, aspergillosis, MRSA and SARS.



Pet allergens (dander) are mainly found in saliva and therefore on hair and skin of pets. When the allergens are inhaled they can lead to serious allergic reactions.



Tobacco smoke contains thousands of chemicals and particles which can irritate the mucous membranes and lead to acute and chronic diseases.



Volatile organic compounds (VOCs) are gaseous chemicals emitted from vehicles, industry and building materials. They can be carcinogenic and cause damage to internal organs.



Smog and ozone can cause irritation of the respiratory tract even at low concentrations and can trigger asthma attacks. While these pollutants are mainly generated outdoors, they enter buildings via doors, windows and ventilation systems.



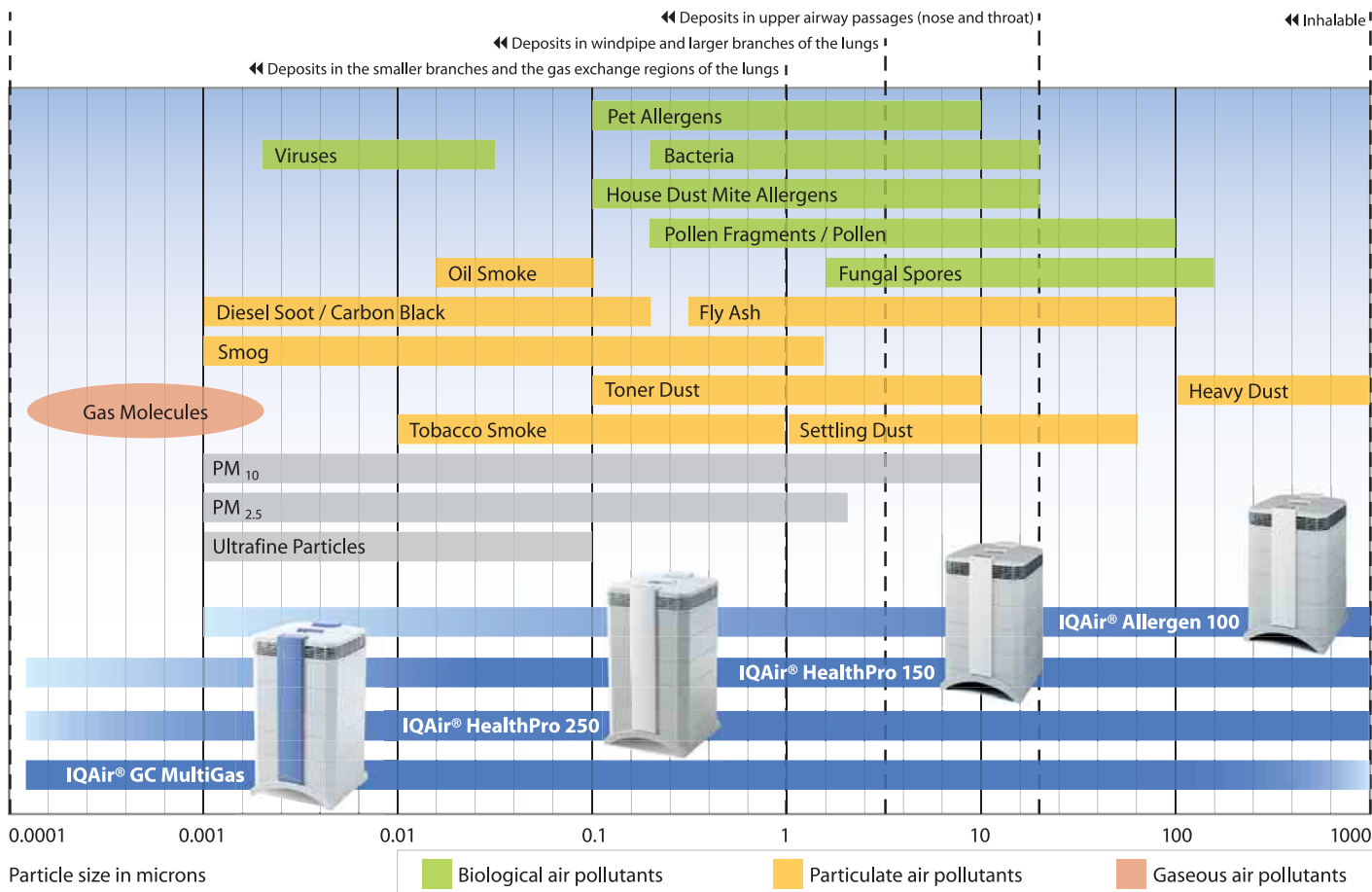
Cleaning products, sprays and solvents can irritate the mucous membranes and aggravate allergies such as asthma and hay fever.



Paints, varnishes and adhesives can contain a multitude of harmful substances. Inhaling the vapours can lead to headache, nausea and allergic reactions. Long-term exposure can lead to chronic diseases.

IQAir® – The Ideal Solution for Your Individual Requirements

The following table shows which IQAir® model is suitable for specific airborne pollutants. The darker the blue stripe, the better the filtration efficiency of the IQAir® system for the respective pollutant.



	Allergen™ 100 The Allergy Specialist	HealthPro® 150 The Compact Allrounder	HealthPro® 250 The Powerful Allrounder	GC MultiGas™ The Gas & Odour Specialist
Allergens (pollen, dander, dust, mite, fungal spores)	★★★★★	★★★★★	★★★★★	★★★★★
Fine Dust and Particulate Matter (PM ₁₀ , PM _{2.5})	★★★★★	★★★★★	★★★★★	★★★★★
Chemicals and Odours	★	★★★	★★★★★	★★★★★
Bacteria and Viruses	★★★★★	★★★★★	★★★★★	★★★★★
Tobacco Smoke	★★ <small>captures particles and particle-bound chemicals, but not gases contained in tobacco smoke)</small>	★★★	★★★★★	★★★★★

★ not recommended ★★ satisfactory ★★★ good ★★★★ very good ★★★★★ excellent

IQAir® HealthPro® 250 – The Features



User-friendly scroll-through LCD display enables easy access to unique programming and menu options.

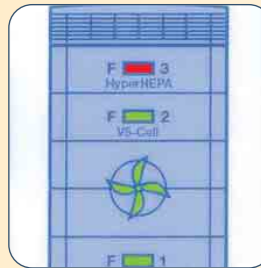
Intelligent filter life monitor – calculates when it is time to replace filters, taking actual use, fan speed and programmed pollution levels into account.

Advanced timer programming – allows the system to switch on automatically at specified times, weekdays and fan speeds.

Electronic filter life monitor and filter change indicator for every filter.

6 fan speed settings allow the selection of the most suitable performance/sound ratio.

3 filter life LEDs provide a visual signal when it is time to replace a filter.



Advanced gas and odour removal – The IQAir® HealthPro 250 features the V5-Cell™ filter – the most advanced gas and odour filter available in a residential room air purifier. The granular media consists of a unique blend of activated carbon and impregnated alumina for the removal of a wide spectrum of gases and unpleasant odours.



Ultra-quiet design – IQAir's "fan-in-centre" design places the fan motor in-between sound attenuating filters. The double-walled housing effectively reduces sound transmission. Rubber suspension pads systematically isolate motor vibration from the air cleaner housing. The result is an air purifier quiet enough for your bedroom.

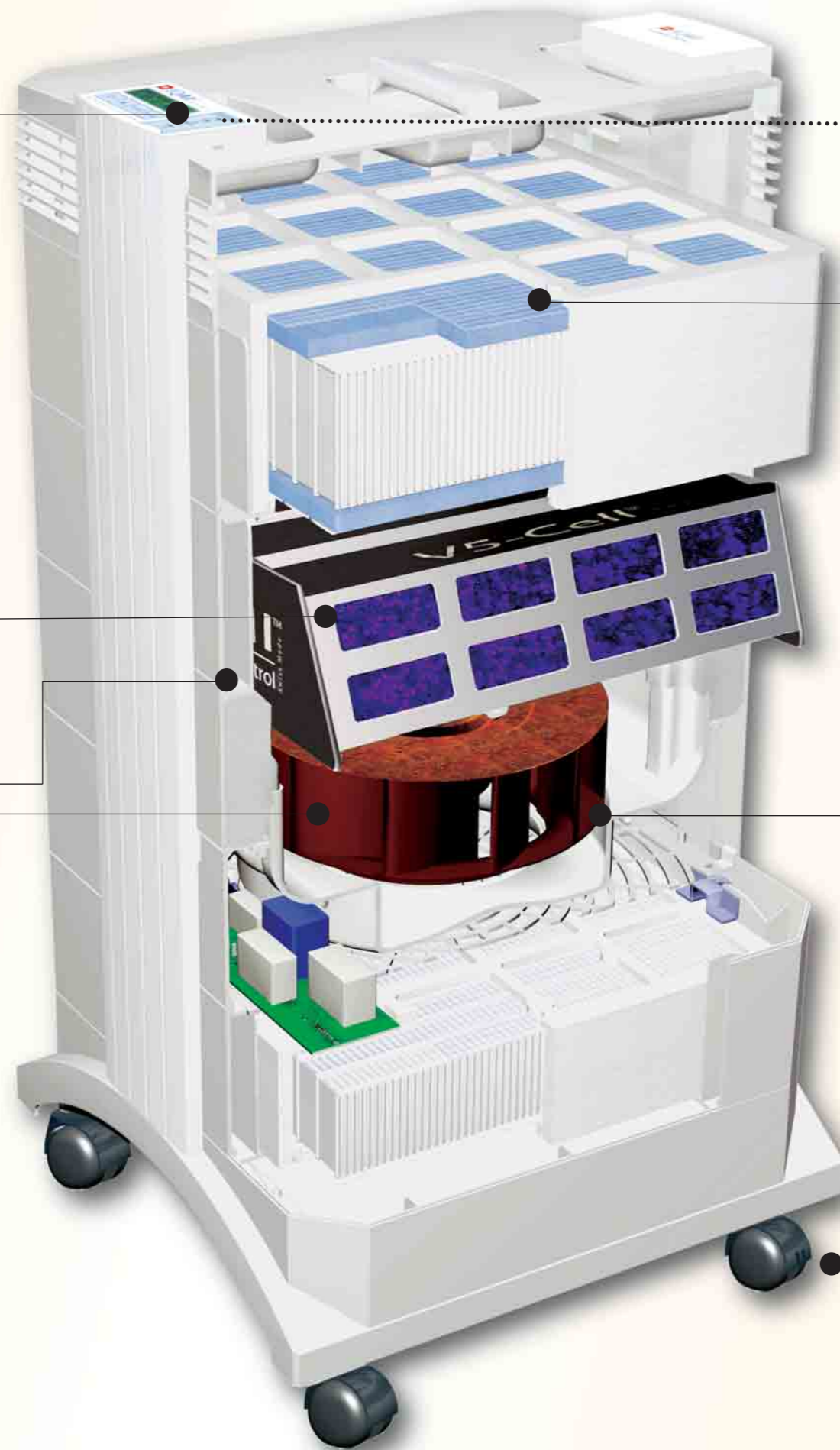


Long-life filters save costs – The use of large surface, high-capacity filter media means that filters last longer.

Low energy consumption – Outstanding energy efficiency at all fan speeds translates into direct cost savings.



Patented modular housing design allows fast and comfortable filter replacement without tools. Independent filter stages allow each filter to be replaced individually, rather than having to replace entire filter blocks. This maximises yield and minimises replacement costs.



Remote control – The sleek ultra-thin remote control allows convenient operation from several meters distance.

IQAir's unique **HyperHEPA® technology** is tested and certified to filter ultrafine pollution particles down to 0.003 microns in size with a guaranteed minimum efficiency of over 99.5%. This is 100 times smaller than what ordinary air cleaners can filter and 10 times smaller than a virus.



Tested and certified – IQAir's HyperHEPA® filter is the world's first residential air filter to be tested and certified in accordance with European Norm EN1822, the industry's most stringent test standard for air filters. This guarantees uncompromising performance even in the most demanding applications.

100% ozone-free – IQAir® systems are certified to produce absolutely no ozone.

The high-performance fan motor has a powerful free-flow rate of 1200 m³/hour, is non-stop use approved and individually balanced for smooth and quiet operation.



Individually certified – IQAir® applies the highest quality control standards by individually testing and certifying each air purifier for filtration efficiency and air delivery. The results are recorded on a hand-signed Certificate of Performance supplied with every IQAir® model.

Mobility casters are supplied as standard with each residential IQAir® system. These allow the system to be moved effortlessly from room to room.



Pure Air for Well-Being and Balance



Awards and Reviews

IQAir® has received more No. 1 product awards and reviews than any other air purifier brand, including:



Consumer Digest "Best Buy" Award 2007 (HealthPro 250). The HealthPro 250 room air purifier has received Consumers Digest's prestigious "Best Buy" award – being named the top product in the premium category. The magazine calls the HealthPro 250 *"the Cadillac of air purifiers"* and give it their top recommendation for *"families with significant allergy considerations."*



Consumer Guide "Best Buy" Award 2005 (Allergen 100). Consumer Guide's team of experts review thousands of products each year according to multiple criteria. The IQAir® Allergen 100 received the overall mark "Excellent" and was crowned with the prestigious "Best Buy" Award designating the best value available at a reasonable price.



Reviewboard Magazine's "Best Buy" Award 2005 (HealthPro 250). *"We have had a first here at Reviewboard. In the 8 years that we have been doing this no product in any category has ever won an Editor's Choice Award two years in a row. Never. The IQAir® HealthPro 250 has accomplished what some companies have said is impossible; they won it twice in a row." "...it is the first product that has ever qualified for our Reviewboard.com "Best Buy" Award."*



Reviewboard Magazine's "Editor's Choice" Award 2005 (HealthPro 250). *"So for the second year in a row I am going to have to give the 2005 Editor's Choice Award for best air filtration device to IQAir's HealthPro 250 system. It is truly amazing."*



Consumer Digest's "Best Buy" Award 2004 (HealthPro 250). The magazine found the IQAir® HealthPro 250 to be *"ideal for allergy sufferers"* and praised its ability to clean the air in large spaces.



Reviewboard Magazine's "Editor's Choice" Award 2004 (HealthPro 250 and GC MultiGas)
"So if you are looking for the best air filtration systems for your home then the folks at IQAir have what you are looking for." "Both of these units are top of class, they filter and push more air around your living space than any other machine we have ever tested in the eight years we've been in business here at Reviewboard Magazine."



Stiftung Warentest "Test Winner" in Test 9/98 (HealthPro 250)
In the independent test by Germany's Consumer Test Foundation the IQAir® HealthPro 250 was the only device out of ten international air cleaners to receive the top mark "very good" for its removal efficiency for airborne particles.

"The IQAir HealthPro 250 model was "very good" at removing particles... That is so to say, after 15 minutes around 85% of all dirt particles of even 0.5 to 1.5 microns in size had already been removed. The [best of the other brands] only removed about half as many particles in comparable conditions. [One of the air cleaners] carries a seal of approval "suitable for allergy sufferers". However, as the test revealed... the IQAir HealthPro 250 was even better."

"Our advice: The best air cleaning effect for airborne particles was achieved by the IQAir HealthPro 250..."



Newsweek Magazine on IQAir: *"We tested it [HealthPro 250] in a basement that had been collecting dust for 20 years, and after two days, that musty smell was gone."* The magazine commended the IQAir® as being *"designed for even larger areas, like the single floor of a house"*.



Cigar Aficionado Magazine on IQAir: *"We tested the [GC MultiGas] in less-than-laboratory, but smokier-than-average condition in the Cigar Aficionado offices, and found it performed admirably under the strain. The unit quickly cleared smoke out of a small office, and soon after the traces of cigar were unnoticeable."*



Wired Magazine on IQAir: *"This Swiss-made model turns your house into a clean room. [The IQAir HealthPro 250] produced air that contained no particles 0.3 microns or larger. Good enough to be used by Hong Kong Hospitals during the SARS outbreak."*



Extreme Makeover 2004 – 2008: For the 4th season IQAir® is selected to "create America's cleanest homes" on ABC's hit TV show "Extreme Makeover: Home Edition". The cooperation started in 2004, when IQAir® was asked to install an "extreme" air cleaning system in the home of a little girl with a weakened immune system due to a heart transplant. Since then IQAir® was called upon in 9 major episodes whenever the cleanest and healthiest indoor air was of critical importance.



American Lung Association Partnership 2004 – 2008: For 5 years running IQAir® has been the American Lung Association's exclusive educational partner of the air purifier industry. The partnership combines the Lung Association's 100 year commitment to promoting lung health with IQAir's 45 year commitment to air cleaning excellence and to raise awareness on indoor air quality issues.

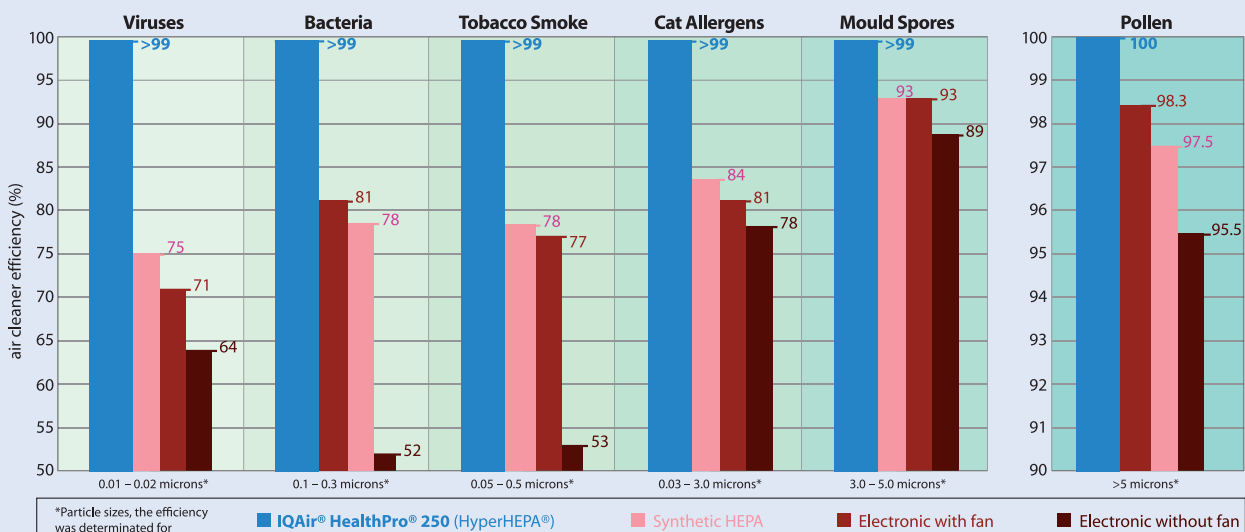
Advanced Multi-Stage Filtration

Each IQAir® model features a patented modular housing which allows the system to be equipped with the most effective filtration technologies for specific air quality needs. Only the most efficient and reliable filter media are selected by IQAir® to guarantee powerful and reliable long-term performance even for the most demanding and critical applications.

<p>Total system efficiency: ≥99.5% for particles ≥0.003µm</p> <p>HyperHEPA® Filter: Hospital-grade HEPA filter (class H12/13) for the control of ultra-fine particles, allergens, bacteria, viruses, mould spores. Surface area: 5 m²</p> <p>PreMax™ Filter: High-capacity pre-filter (class F8) for the control of coarse and fine dust particles. Surface area: 2.8 m²</p>	<h2>Allergen™ 100</h2> 	<h2>HealthPro® 150</h2> 	<p>Total system efficiency: ≥99.5% for particles ≥0.003µm</p> <p>HyperHEPA® Filter: Hospital-grade HEPA filter (class H12/13) for the control of ultra-fine particles, allergens, bacteria, viruses, mould spores. Surface area: 5 m²</p> <p>PreMax™ MG Filter: Combination Pre- and Gas filter. Pre-filter (class F8) for the control of coarse and fine dust particles. Surface area: 1.9 m². Wide-spectrum MultiGas™ granular media mix for the control of a broad range of chemical pollutants and odours. Content: 1 kg</p>
<p>Total system efficiency: ≥99.5% for particles ≥0.003µm</p> <p>HyperHEPA® Filter: Hospital-grade HEPA filter (class H12/13) for the control of ultra-fine particles, allergens, bacteria, viruses, mould spores. Surface area: 5 m²</p> <p>V5-Cell™ MG Filter: Wide-spectrum MultiGas™ granular media mix for the control of a broad range of chemical pollutants and odours. Content: 2.5 kg</p> <p>PreMax™ Filter: High-capacity pre-filter for (class F8) the control of coarse and fine dust particles. Surface area: 2.8 m²</p>	<h2>HealthPro® 250</h2> 	<h2>GC MultiGas™</h2> 	<p>Total system efficiency: ≥ 99% for particles ≥ 0.3µm</p> <p>GC Post-Filter Sleeves: 4 electrostatically charged fibre filters for the removal of fine dust. Surface area: 0.5 m²</p> <p>GC MultiGas™ Cartridge Filter: 4 Cartridges with wide-spectrum media mix (activated carbon & impregnated alumina) for the filtration of a broad range of chemicals and odours. Content: 5.4 kg</p> <p>GC HEPA Pre-Filter: High-efficiency HEPA filter (class H11) for the control of coarse, fine and ultrafine dust particles, allergens and microorganisms. Surface area: 2.8 m²</p>

IQAir's HyperHEPA® Technology

The accredited test laboratory Interbasic Resources, Inc. purchased a number of room air cleaners on the open market and tested them for their filtration efficiency. Only the IQAir® HealthPro 250 was able to trap over 99% of virtually all types of pollution particles. Since the IQAir® Allergen 100 and HealthPro 150 models feature identical particle filters to the HealthPro 250, the same results can also be expected of these models. The below graphs are based on independent laboratory tests which determined the HyperHEPA® filter's removal efficiency for various particle size ranges.



TECHNICAL INFORMATION

Model	Allergen 100	HealthPro 150	HealthPro 250	GC MultiGas
Air delivery per fan speed in m ³ /h	40 70 110 150 240 380	40 80 140 190 240 350	40 80 150 200 240 380	40 85 150 210 260 360
Weight incl. filters (approx.)	12 kg	14 kg	16 kg	20 kg
Power requirements [consumption]	220 – 240 V / 50 – 60 Hz [20 – 160 W]			
Sound pressure / sound power	L _{PA} = 22 – 59 dBA / L _{WA} = 30 – 70 dBA (tolerance: ± 2 dBA)			
Dimensions (H x W x D)	61 x 38 x 41 cm		71 x 38 x 41 cm	
Fan motor	centrifugal, backward curved, with thermal protector, non stop use approved			
Control panel	4-key touch-pad with 16 character 2-line LCD display			
Air intake	dual arches at base of unit			
Air outlet	320° EvenFlow™ diffuser			
Colour of main housing / locking arms	light grey / white		light grey / light blue	
Housing material	non-offgasing, impact-resistant, UV-stabilized ABS			

Efficiency

Total system efficiency (certified)	≥ 99.97% for particles ≥ 0.3 micron (µm)	≥ 99% @ ≥ 0.3 µm
Air delivery (certified)	yes	
Leak tested	yes	

Filter Configuration

Pre-filter / Pre & gas filter (HealthPro 150)	Type: PreMax™ large capacity pre-filter Media: wet laid non-woven glass microfiber, mini-pleated; efficiency 55% at 0.3 µm (class F8) Surface area: 2.8 m ²	Type: PreMax™ MG combined pre-, gas- and odour filter Pre-filter media: wet laid non-woven glass microfiber, mini-pleated, efficiency 55% at 0.3 µm (class F8) Surface area: 1.9 m ²	Type: PreMax™ large capacity pre-filter Media: wet laid non-woven glass microfiber, mini-pleated, efficiency 55% at 0.3 µm (class F8) Surface area: 2.8 m ²	Type: high-efficiency HEPA fine dust pre-filter Media: HEPA class H11, mini-pleated with solvent-free separators Surface area: 2.8 m ²
Gas & odour filter		Gas- & odour filter media: MultiGas™ granular activated carbon & KMnO ₄ impregnated alumina (1 kg)	Type: V5-Cell™ wide-spectrum gas and odour filter Media: MultiGas™ granular activated carbon & KMnO ₄ impregnated alumina (2.5 kg)	Type: 4 gas & odour control filter cartridges (GC-technology) Media: MultiGas™ granular activated carbon & KMnO ₄ impregnated alumina (5.4 kg)
HEPA-filter / Post-filter (GC MultiGas)	Type: HyperHEPA® clean-room-grade high-efficiency particulate arresting filter Media: HEPA class H12/H13, wet laid glass microfiber, mini-pleated with solvent-free separators Surface area: 5 m ²	Type: HyperHEPA® clean-room-grade high-efficiency particulate arresting filter Media: HEPA class H12/H13, wet laid glass microfiber, mini-pleated with solvent-free separators Surface area: 5 m ²	Type: HyperHEPA® clean-room-grade high-efficiency particulate arresting filter Media: HEPA class H12/H13, wet laid glass microfiber, mini-pleated with solvent-free separators Surface area: 5 m ²	Type: 4 GC post-filter sleeves Media: electrostatically charged fiber Surface area: 0.5 m ²

Features

Multiple display languages	English, French, German, Italian (user-selectable)			
Suitable for rooms up to	75 m ²	65 m ²	75 m ²	70 m ²
Fan speed settings	6			
Intelligent filter life monitor	Monitors filter life of each individual filter			
Filter life status LEDs	2	2	3	3
Advanced timer	Allows programming of operating hours and weekdays			
Advanced fan speed selection	Allows programming of different fan speeds for 2 different time periods (e.g. day time / night time speed)			
Adjustable filter load indices	2 (large dust, fine dust)	3 (large dust, chemicals, fine dust)	3 (large dust, chemicals, fine dust)	3 (large dust, chemicals, fine dust)
Supplied accessories	Remote control (incl. battery), set of casters (GC MultiGas™: deluxe casters), power cord, certificate of performance			
Electrical safety approved and certified	IEC/IECEE (CB-Scheme), CE, SEV, CCA, KTL, PCBC, ECU (depending on electrical requirements)			

© 2008 IQAir® Group. All rights reserved. IQAir®, HealthPro® and HyperHEPA® are the registered trademarks of the IQAir® Group. V5-Cell™, PreMax™ and EvenFlow™ are trademarks of the IQAir® Group. IQAir® systems and filters are protected under U.S. patents 6 001 145 and 6 159 260. Other U.S., European and Asian patents pending. IQAir® reserves the right to change specifications contained in this document at any time and without prior notice.


First in Air Quality

Contact your authorised IQAir® Dealer for more information or visit www.iqair.com